

STANDARD ARRIVAL  
CHART - INSTRUMENT  
(STAR) - ICAO

TRANSITION ALTITUDE  
10000 FT

ASTANA TOWER 135.5  
ASTANA APPROACH 124.6  
ASTANA RADAR 120.7  
ASTANA ATIS(EN) 129.5  
ASTANA ATIS(RU) 128.3

BEDKA 4T, BEDKA 3S,  
EDANO 4S, KODOL 4S,  
KODOL 4T, KOKON 4S,  
KOLUR 4S, VAGEM 4S,  
VETUB 5S

ASTANA  
NURSULTAN NAZARBAYEV  
INTERNATIONAL AIRPORT  
RWY 04

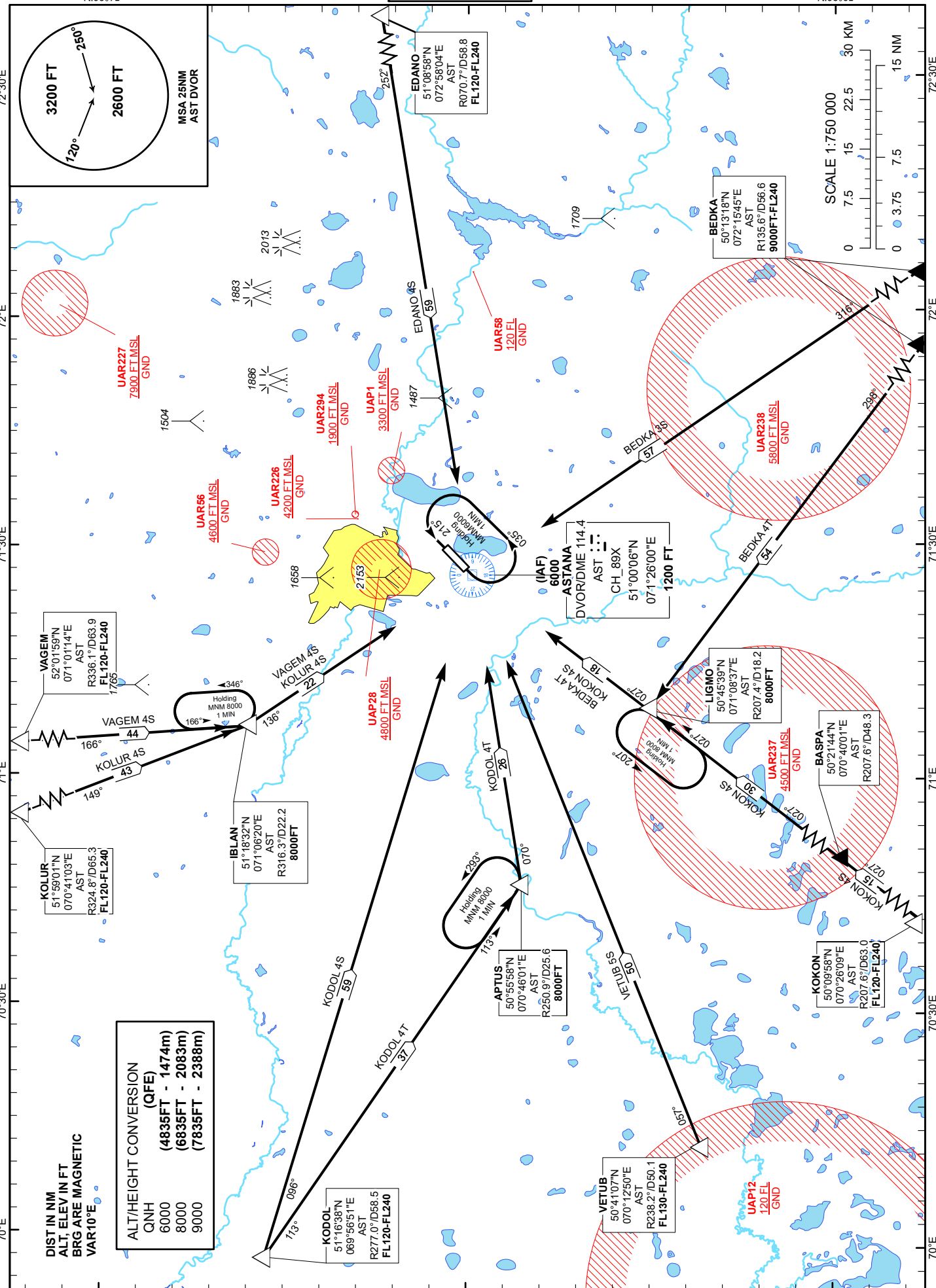
N.06.19

N.06.09

CHANGE: VETUB ALT.

DIST IN NM  
ALT, ELEV IN FT  
BRG ARE MAGNETIC  
VAR 10°E

ALT/HEIGHT CONVERSION  
(QFE)  
QNH 6000  
8000  
9000  
(4835FT - 1474m)  
(6835FT - 2083m)  
(7835FT - 2388m)



## STANDARD ARRIVAL ROUTES - INSTRUMENT (STAR) ASTANA RWY 04

### VAGEM 4S

After crossing VAGEM (R336.1° D63.9 AST), proceed on track 166° to IBLAN (R316.3° D22.2 AST), then turn LEFT on track 136° proceed to DVOR/DME AST.  
Cross VAGEM at FL120-FL240.  
Cross IBLAN at 8000.  
Cross DVOR/DME AST at 6000.

### EDANO 4S

After crossing EDANO (R070.7° D58.8 AST) proceed on track 252° to DVOR/DME AST.  
Cross EDANO at FL120-FL240.  
Cross DVOR/DME AST at 6000.

### BEDKA 3S

After crossing BEDKA (R135.6° D56.6 AST), proceed on track 316° to DVOR/DME AST.  
Cross BEDKA at 9000FT-FL240.  
Cross DVOR/DME AST at 6000.

### BEDKA 4T

After crossing BEDKA (R135.6° D56.6 AST) proceed on track 298° to LIGMO (R207.4° D18.2 AST), after crossing LIGMO (R207.4° D18.2 AST) turn RIGHT proceed on track 027° to DVOR/DME AST.  
Cross BEDKA at 9000FT-FL240.  
Cross LIGMO at 8000.  
Cross DVOR/DME AST at 6000.

### KOKON 4S

After crossing KOKON (R207.6° D63.0 AST), proceed on track 027° to BASPA (R207.6° D48.3 AST), After crossing BASPA proceed on track 027° to LIGMO (R207.4° D18.2 AST), After crossing LIGMO proceed on track 027° to DVOR/DME AST.  
Cross KOKON at FL120-FL240.  
Cross LIGMO at 8000.  
Cross DVOR/DME AST at 6000.

### VETUB 5S

After crossing VETUB (R238.2° D50.1 AST), proceed on track 057° to DVOR/DME AST.  
Cross VETUB at FL130-FL240.  
Cross DVOR/DME AST at 6000.

### KODOL 4S

After crossing KODOL (R277.0° D58.5 AST), proceed on track 096° to DVOR/DME AST.  
Cross KODOL at FL120-FL240.  
Cross DVOR/DME AST 6000.

### KODOL 4T

After crossing KODOL (R277.0° D58.5 AST), proceed on track 113° to APTUS (R250.9° D25.6 AST), After crossing APTUS, turn LEFT on track 070° proceed to DVOR/DME AST.  
Cross KODOL at FL120-FL240.  
Cross APTUS at 8000.  
Cross DVOR/DME AST at 6000.

### KOLUR 4S

After crossing KOLUR (R324.8° D65.3 AST), proceed on track 149° to IBLAN (R316.3° D22.2 AST), After crossing IBLAN, turn LEFT on track 136° proceed to DVOR/DME AST.  
Cross KOLUR at FL120-FL240.  
Cross IBLAN at 8000.  
Cross DVOR/DME AST at 6000.